



Booking Information

GLOGGNITZ SCOUT CENTER



All the information about booking
Gloggnitz Scout Center in four chapters

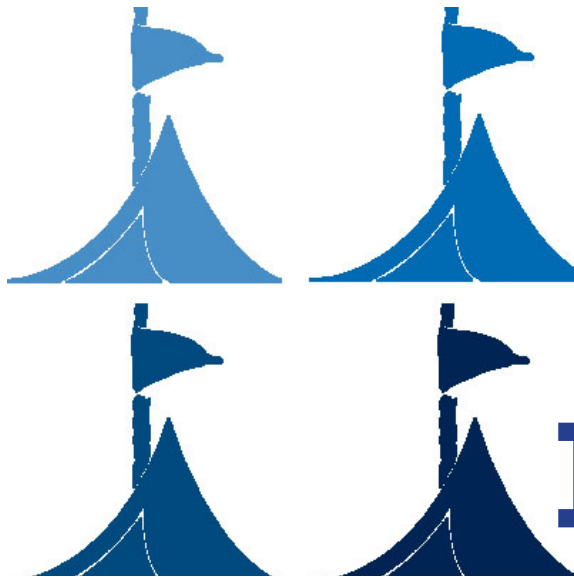
1. The most important in a nutshell
2. Building & Campsite
3. Gloggnitz & Surroundings
4. Important Contacts & Infrastructure

Pfadfindergruppe Gloggnitz
Pfadfinderweg 1
2640 Gloggnitz
www.pfadfinder-gloggnitz.at



MAY, 2017

Chapter 1



THE MOST IMPORTANT INFORMATION IN A NUTSHELL

Gloggnitz Scout Group's new Scout Centre with its large playing field, spacious rooms for activities and accomodation and the modern kitchen offers everything the heart could wish for.

On weekends as well as in the summer months, it is an ideal place for scouts, schools classes, clubs and seminars.

Our Address:

Pfadfinderheim der Pfadfindergruppe Gloggnitz;
Pfadfinderweg 1, neben dem Schloss Gloggnitz
A-2640 Gloggnitz
www.pfadfinder-gloggnitz.at

Contact:

Wolf Angelika und Erich
Tel.: 0650 4515044
e-mail: vermietung@pfadfinder-gloggnitz.at

The building:

Größe: ca. 515m²

Rooms:

Ground floor: modern kitchen, spacious common room,
sanitary facilities

First floor: large common room, Ranger/Rover room, hall

sleeps 30 people (30 mattresses and 6 mats provided; you have to bring your own sheets)

Kitchen: equipped with gas cooker, camping cooker, dishwasher, refrigerator, pots and pans, plates and dishes for 50 people

Sanitary facilities: lavatory, 3 showers, 4 toilets (one of them disabled friendly)

The open-air area:

Large roofed terrace,

Campsite/Playing field (~4519 m²)

Campfire site with arena-like sitting facilities

Parking space for two cars within the Scout Center area

15 ale benches

Wood for building and making fire can be supplied for upon agreement

Costs:

Accommodation in the building p.p./night: 6,00 €

Accommodation on the campsite p.p./night: 4,00 €

Electricity: 12,00 € / day

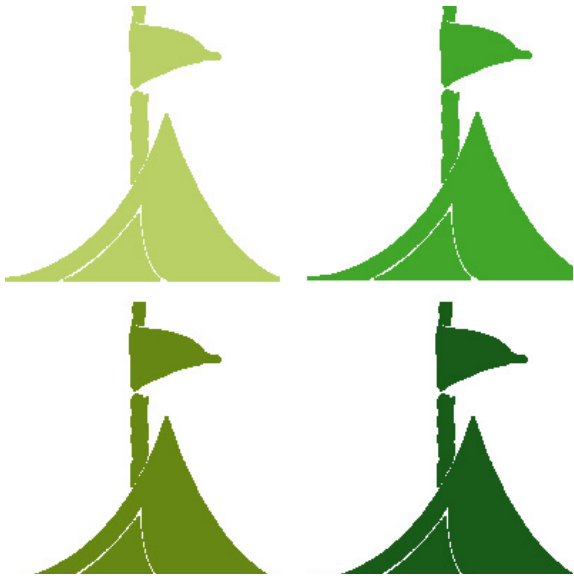
Garbage fee: 3,00 €

Wood for building/fire (if applicable): 5,00 € /day

Cleaning fee (if applicable): up to 150,00 €

During the summer months (July and August) reservations are only valid upon the payment of a deposit of 100,00 €.

Chapter 2



BUILDING & CAMPSITE

Due to the construction of the Semmering railway tunnel we had to move out of our old Scout Center. We then built a new Scout Center that can – as we hope – fulfill all wishes and necessities. Our new home was finished on the edge of the woods next to Gloggnitz castle in 2012.

The Building:

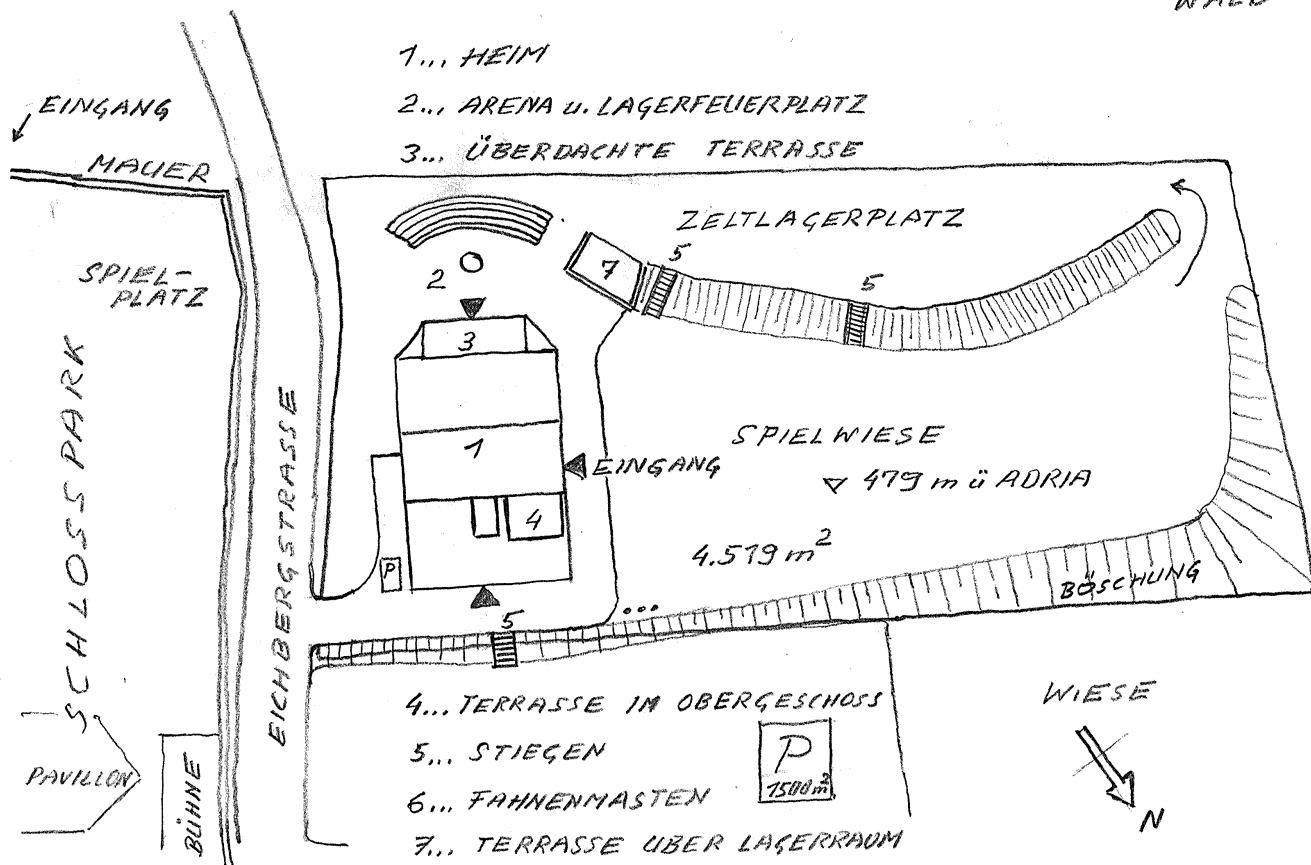
LAGEPLAN 2cm $\hat{=}$ 10m

WALD

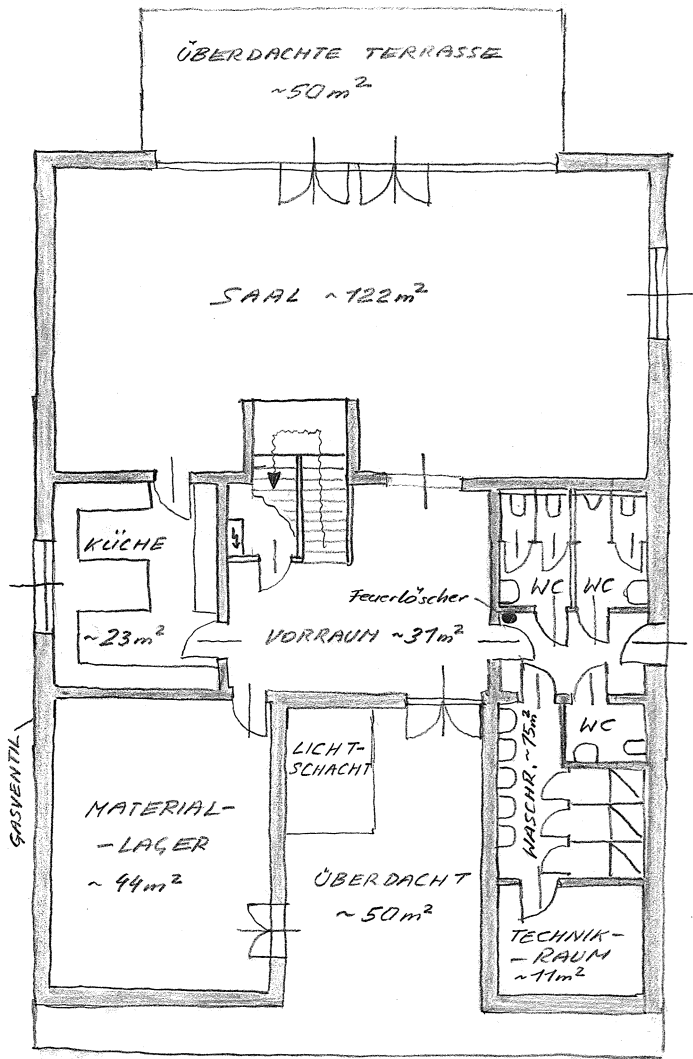
1... HEIM

2... ARENA U. LAGERFEUERPLATZ

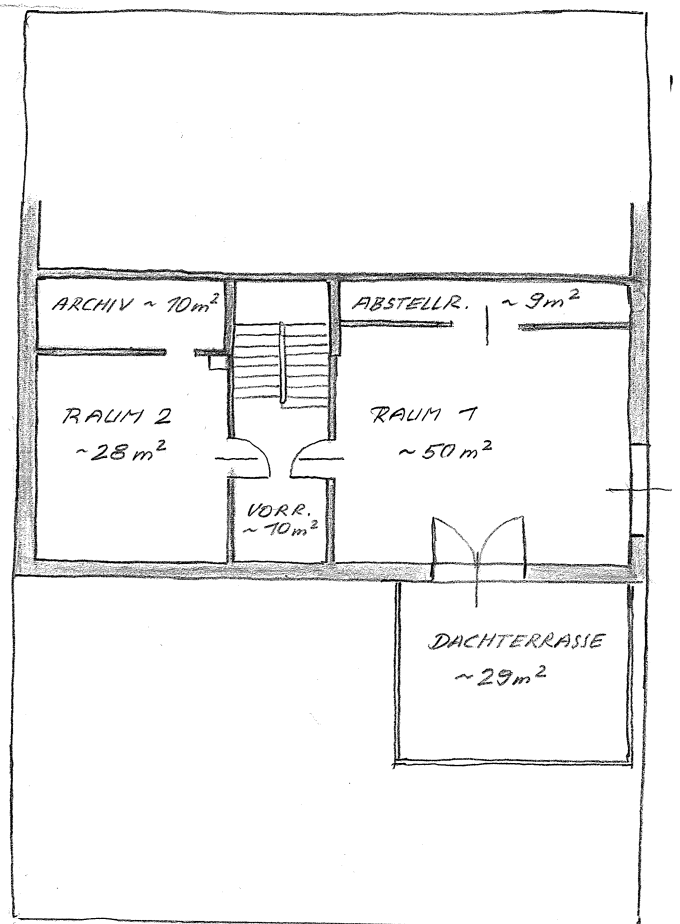
3... ÜBERDACHTE TERRASSE



ERDGESCHOSS 1cm = 1m



OBERGESCHOSS 1cm = 1m



Ground Floor:

Large common room:

The large common room with its 122m² is the ideal place for games, parties and more. There is a connecting door and a hatch from the kitchen to the common room, which is therefore also perfectly suitable as a dining room. Stackable desks and chairs are provided.



Kitchen:

Our modern kitchen is equipped with a fast-cleaning dishwasher, a gas stove, a large gas cooker and two refrigerators with a freezer section. There is also a blender, coffee maker, bread slicer and kitchen scales. Plates and dishes for 50 people are provided.



Sanitary facilities:



Our lavatory has got 5 sinks with mirrors and 3 separate showers.

Additionally, there is a restroom for girls with two toilets and one for boys with a toilet and a urinal. Water from our own rainwater cistern is used for flushing and thus helps saving water. Also, there is a disabled friendly toilet.

First floor:

Room 1:

Room 1 is our conference room and is equipped with 6 desks and chairs, which are stackable and can be moved aside. This makes it possible to use the room as accommodation. In an adjoining storage room, there are 30 mattresses, which are provided by us. This room also leads to our upper terrace, which can be locked and offers a marvellous view of the castle.



Room 2:

Room 2 is our Rover/Ranger room, which can also be used for accommodation. There are two sofas and a table soccer, which is very popular among all groups.



Archive:

In our archive we store old files, logbooks and materials. Visiting groups do not have access to this room.

The Campsite / Playing field

The 3500m² field can be used as a campsite or as a playing field for groups accommodated in the building. As there are two fields, there is also the possibility of using the upper terrace as a campsite and the lower one as a playing field.

The arena-like campfire site is an ideal stage not only for campfires. Directly adjoining the campfire site is a roofed terrace, which leads into the large common room. This room offers space for at least 60 people and the adjoining terrace can be used in any weather conditions.

Next to the building, within the Scout Center area, there is a parking space for 2 cars and busses can stop directly in front of the building. Next to the Scout Center, there is also a spacious parking place.



Location

The Scout Center is located a bit outside the center on the edge of the woods without neighbours. The town center, as well as the public swimming pool, is within 10 minutes walking distance. Just next to the Scout Center there is Gloggnitz Castle with a playground and a roofed pavilion.

How to get there

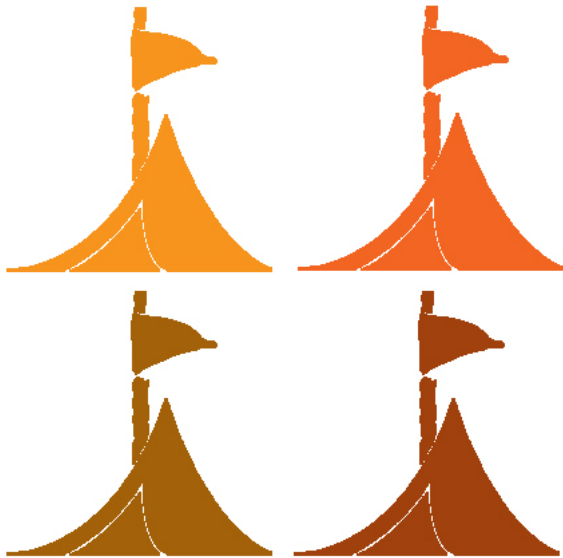
By train:

The Scout Centre is a 30-minute walk away from Gloggnitz train station. There are regional train connections from Wiener Neustadt to Gloggnitz every 30 minutes. In Wiener Neustadt and Mürzzuschlag, there are larger train stations, where Intercity trains stop regularly.

By car:

Gloggnitz is located directly at the S6 (Semmerings Schnellstraße) and has an exit and access to the motorway in both directions. If you come from the A2 (Südautobahn), you can take the S6 at Knoten Seebenstein. From the S6 or B17 (Triester Bundesstraße) you take the road in the direction of Reichenau/Höllental and before the underpass at the railway construction site turn left in the direction of Schloss Gloggnitz (Eichberg).

Chapter 3



GLOGGNITZ & SURROUNDINGS

In 1094, Gloggnitz was first officially mentioned as a town. Since then, a lot of things happened in and around Gloggnitz.

Even though Gloggnitz is not and never was an important metropole, it has an interesting history. Between the Alpine Foothills and the “Wiener Becken” valley, Gloggnitz and its surroundings offer a diverse and gorgeous landscape.

Since the Emperors and Nobles took up residence in the area in their summer retreats, the region is also well-known outside southern Lower Austria.

In this chapter we would like to show what Gloggnitz and the surrounding area has to offer for its visitors.

Gloggnitz Castle



Gloggnitz Castle is located just next to our Scout Center. The castle, which originally was a Benedictine monastery, was first mentioned as early as 1094. In 1928, it was purchased by the town of Gloggnitz. Nowadays, it is used for weddings, expositions, seminars and receptions. Since 1978, Wartenstein-Gloggnitz Scout Guild runs a small museum in the Castle church. Upon request the Scout Guild will lead you through the museum and the church. The castle and the park with its large playground are an ideal setting for exciting outdoor games.

http://www.gloggnitz.at/de/bildung___kultur/museen___ausstellungen/schlossmuseum/

Public Swimming Pool Gloggnitz



Just a ten-minute walk from our Scout Center, there is the Public Swimming Pool "Naturbad Gloggnitz". In 1997, the whole swimming pool was newly designed. Today, Naturbad Gloggnitz attracts visitors from the whole area with a 1,200 m² large swimming lake with a biological self-cleaning function and a large adventure pool with slides and whirlpools.

http://www.gloggnitz.at/de/freizeit___tourismus/freizeit_und_sport/

Rennermuseum

In the former summer residence of the Second Republic's first President, Dr. Karl Renner, the „Dr. Karl Renner Club“ has installed a museum in commemoration of this great Austrian personality. A few years ago, the museum was renovated and now also explains the history of the area during and after WWII and the consolidation of Europe. Thanks to its inviting design, the museum is very suitable for children as well.

www.rennermuseum.at



The Semmering Railway & Railway Hiking Trail



The Semmering railway line, which was planned and built by Carl Ritter von Ghega, was completed in 1854. Across an overall track length of 41 km the Semmering railway overcomes an altitude difference of 460 m and passes 15 tunnels and 16 viaducts. Due to the harmonious blend of nature and technology and the unique construction technique of the railway it was declared a UNESCO World Heritage site in 1998.

The Semmering railway line is definitely worth a ride. Along the whole line, there is a well sign-posted Hiking Trail. We recommend the hike from Semmering train station via Wolfsbergkogel, Klamm and Eichberg back to the Scout Center.

Find more information at www.semmeringbahn.at

Semmering

For many years, the Semmering used to be the most popular travel destination of the monarchy's high society. Until today, you can experience some of the slightly faded atmosphere of the Semmering as a royal summer escape destination. In the past years, the "Magic Mountain" Semmering has also grown as a modern tourist attraction of the Viennese Alps in Lower Austria. Many different hiking trails start from Semmering train station. The Semmering is also a popular destination for sports adventures, in summer as well as in winter. In winter, you can go skiing or sledding at Hirschenkogel mountain. Even World Cup skiing races take place at Semmering every second year. In summer, there is a downhill trail at Semmering bikepark for mountainbikes and scooters. Less adventurous nature-lovers take the cable car up the Hirschenkogel and enjoy a breathtaking view from the viewing platform.



www.semmering.at or www.hirschenkogel.at

Gut Gasteil



Just a few kilometres away from Gloggnitz, Gut Gasteil is located in the village of Prigglitz. Under the slogan "Kunst in der Landschaft" (=art in landscape) the artist family Seidl and numerous fellow artists constantly create new worlds to explore around the Seidl estate. Gut Gasteil shows in how art can be made accessible to all age groups in a fascinating manner – free of charge. You can choose Gut Gasteil as a destination for a hike from Gloggnitz Scout Center. Via Schlöglmühl, St. Christoph and Prigglitz you can reach Gut Gasteil and return to Gloggnitz via Fliedergraben and Stuppachgraben.

www.gutgasteil.at

Höllental (*Hell Valley*)



In the Höllental valley, the Schwarza river makes its way between the two mountains Rax and Schneeberg, which are both more than 2000m high. Especially in summer, the wildly romantic valley is a popular destination for day trips. A bath in the Schwarza river is refreshing even on the hottest days! On milder days, the Höllental valley invites you for a walk along the "Wasserleitungsweg", a hiking route along the historical water supply line from Hirschwang to Kaiserbrunn. For further information about the importance and the origins of this water supply line, you can visit the "Wasserleitungsmuseum" in Kaiserbrunn.

<http://www.wien.gv.at/wald/quelle/hirschwang.htm>

Rax

The 2007 m high Rax mountain is one of the most important mountains of the "Viennese Alps in Lower Austria". Since 1926, the Rax cable car conveys tourists from Hirschwang up the Rax mountain. On the Rax plateau, there are easy hiking tracks also for inexperienced hikers. Nevertheless, we would recommend a guided hike for alpine inexperienced groups. Rax mountain offers unforgettable alpine experiences for everyone – including rare highlights of flora and fauna, such as Edelweiß, gentian and chamoises. From our Scout Center, you can reach the valley station of the cable car in Hirschwang by bus or by the narrow-gauge railway from Payerbach-Reichenau trainstation.



www.raxalpe.com or www.lokalbahnen.at/hoellentalbahn

Schneeberg



With an altitude of 2076m, the Schneeberg is Lower Austria's highest mountain. For mountain lovers, there are many hiking and climbing routes from Höllental up the Schneeberg. Those who prefer the comfortable way can take the "Salamander" rack railway from Puchberg (about 45 minutes from Gloggnitz by car).

www.schneebergbahn.at

Hermannshöhle (*Hermann's Cave*)

Near Kirchberg am Wechsel, you can find a natural gem of the region. Hermann's Cave is one of the largest limestone caves in Austria, forming phantastic and fabulous shapes. If you are lucky, you can also encounter bats when you visit - many different species of bats are at home there. And don't forget to bring warm clothes – it's always quite chilly in Hermann's Cave.

www.hermannshoehle.at

Lindt chocolate factory

Neither of historical interest nor culturally important or beautiful to look at – and still the chocolate factory Lindt & Sprüngli is the place attracting most visitors in Gloggnitz. If you stay in Gloggnitz, a visit to „chocolate paradise“ is a must do!

Wiener Neustadt & Mürzzuschlag

The two nearest larger cities near Gloggnitz are worth a visit, if you want a change to quiet nature. Wiener Neustadt (about 30 minutes from Gloggnitz by train or car), the second largest city in Lower Austria and former royal residence, has everything you could expect from a larger city: sights, cultural activities, bars and restaurants and shops.

Mürzzuschlag (about 20 minutes from Gloggnitz by car) is worth a visit for its Brahms, Rossegger and winter sports museum.

www.wiener-neustadt.gv.at & www.muerzzuschlag.at

Vienna, Graz, Sankt Pölten & Eisenstadt

Austria's capital Vienna, as well as the three provincial capitals, are all within reach in an about an hour from Gloggnitz.

Vienna: ~45 minutes by car, 1 hour by train

Graz: ~1 hour by car, 1,5 hours by train

St. Pölten: ~ 1 hour by car

Eisenstadt: ~40 minutes by car

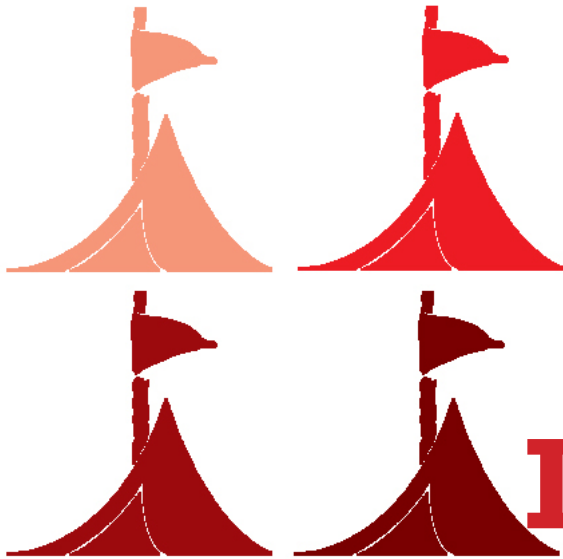
All of these cities have their unique character and are definitely worth a visit. From Gloggnitz you can take day trips to all of them!

Further Information

For further information about activities and attractions in the region, check Gloggnitz' homepage, the homepages of the surrounding villages (Enzenreith, Priggilitz, Payerbach, Reichenau, ...) or www.wieneralpen.at and www.zauberberge.at

If you are planning on visiting a number of museums and attractions in Lower Austria, check out the "Niederösterreichcard", with which you will have free entrance or reduced admission fees for many tourist attractions.

Chapter 4



IMPORTANT CONTACTS & INFRASTRUCTURE

This chapter gives an overview of contacts that could be of importance for your stay in Gloggnitz.

We are doing our best to keep this leaflet up-to-date. Still, we would kindly ask you to check the internet for any changes before you arrive, especially doctors' contacts.

Emergencies:

Ambulance: 144

Fire Brigade: 122

Poision Information Center: 01/406 43 43

Police: 133

Emergency Doctor: 141

General Practitioners in Gloggnitz

Dr. Johannes SCHIMEK

Johann-Lahn-Gasse 5

Tel.: 02662/45632

Office hours: Mo, We, Fr 7.30-11.00,
Th 7.30-11.00 and 16.00-18.00

Dr. Hans-Peter SEIT

Zenzi-Hölzl-Straße 2

Tel.: 02662/44200

Office hours: Mo 14.00-18.00,
Tue and Th 7.30-12.30, Fr 8.00-12.00

Dr. Patricia WINDBRECHTINGER

Dr. Karl Rennerplatz 2

Tel.: 02662/42929

Office hours: Mo, Tue, Th, Fr 8.00-12.00, We
14.30-18.00

Dr. Christian BAUMFRISCH

Sparkassenplatz 6

Tel.: 02662/42650

Office hours: Mo and We 8.00-12.00 and
14.00-18.00, Tue and Fr 8.00-12.00

Dr. Christian KOLL

Richtergasse 19

Tel.: 02662/43350

Office hours: Mo, We, Fr 7.30-11.00, Tue,
Fr 16.30-18.00

Dentists

Dr. Michael PAUR

Hauptstraße 15

Tel.: 02662/42664

Office hours: Mo, Tue, Th, Fr 8.00-12.00 und 14.00-
17.00

Dr. Karin AIGNER

Ing.-Robert-Dunz-Straße 1

Tel.: 02662/42791

Office hours: Mo 8.30-12.00 and 13.00-18.00, Tue
8.30-13.00, Th 8.30-17.00, Fr 8.30-9.30

You can find out which doctors are on duty at the weekends or on national holidays at:
<http://www.gloggnitz.at/de/gemeinde/bereitschaftsdienste/aerzte>

Hospitals

LANDESKLINIKUM THERMENREGION NEUNKIRCHEN

Peischinger Straße 19

A-2620 Neunkirchen

Tel.: 02635/602-0

LANDESKLINIKUM WIENER NEU- STADT

Corvinusring 3 –5

2700 Wiener Neustadt

Tel.: 02622/321-0

Krankenhaus mit Kinderabteilung

Pharmacy

Apotheke „Zum heiligen Leopold“

Hauptstraße 29
Tel.: 02662/42252

Public Services

Rotes Kreuz (Ambulance)

Semmeringstraße 87
Tel.: 02662/42575

Police Station Gloggnitz

Wiener Straße 2
Tel.: 05/9133-3352

Römisch-katholisches Pfarramt

Hartholzstraße 5
Tel.: 02662 / 42259

ÖAMTC

Obere Weißenbachstraße 15
Tel.: 02662/42328

Railway Station Gloggnitz

Bahnhofstraße 1
Tel.: 02662/42274-383

Public Transport

Retter GmbH

Peischingerstraße 52
A-2620 Neunkirchen,
Tel.: +43 (0)2635 / 62 360
www.retter-linien.at

Fire Brigade Gloggnitz-Stadt

Kdt. HBI Thomas Rauch
2640 Gloggnitz, Rennergasse 10A
Tel.: 02662/45393

Stadtamt Gloggnitz

Sparkassenplatz 5
Tel.: 02662/42401-0

Evangelisches Pfarramt

Dr.-Martin-Luther-Straße 2
Tel.: 02662 / 42279

Postamt

Hauptstraße 32

Neue Mitsch Bus GmbH

Guntramser Straße 169
A-2620 Natschbach-Loipersbach
Tel.: 02635/710 20
www.neuemitsch.at

Supermarkets

Hofer KG (7 Minutes by car)

Wiener Straße 102
2640 Gloggnitz

Penny Markt (5 minutes by foot)

Johannesfelsengasse 1
2640 Gloggnitz

Billa AG („große Billa“)

Wiener Straße 51
2640 Gloggnitz

Lidl Austria GmbH

Wiener Straße 54-56
2640 Gloggnitz

Spar-Markt Rössli

Wiener Straße 8a
2640 Gloggnitz

Backerys

Bäckerei Gruber

Hauptstraße 30
2650 Payerbach
Tel.: 02666/52646

Fair trade and regional goods Welt Laden

Hauptstraße 21
Tel.: 02662/42327

Farmer's Market

every Friday afternoon at the Hauptplatz

Contact during your stay in Gloggnitz

At your stay in Gloggnitz, a member of our Scout Center will be responsible for you and will be ready to answer your questions at any time!

We wish you a pleasant stay in Gloggnitz!

Niederösterreichische Pfadfinder und
Pfadfinderinnen, Gruppe Gloggnitz
Pfadfinderweg 1
2640 Gloggnitz
www.pfadfinder-gloggnitz.at
gruppe@pfadfinder-gloggnitz.at
ZVR-Zahl: 503257693

